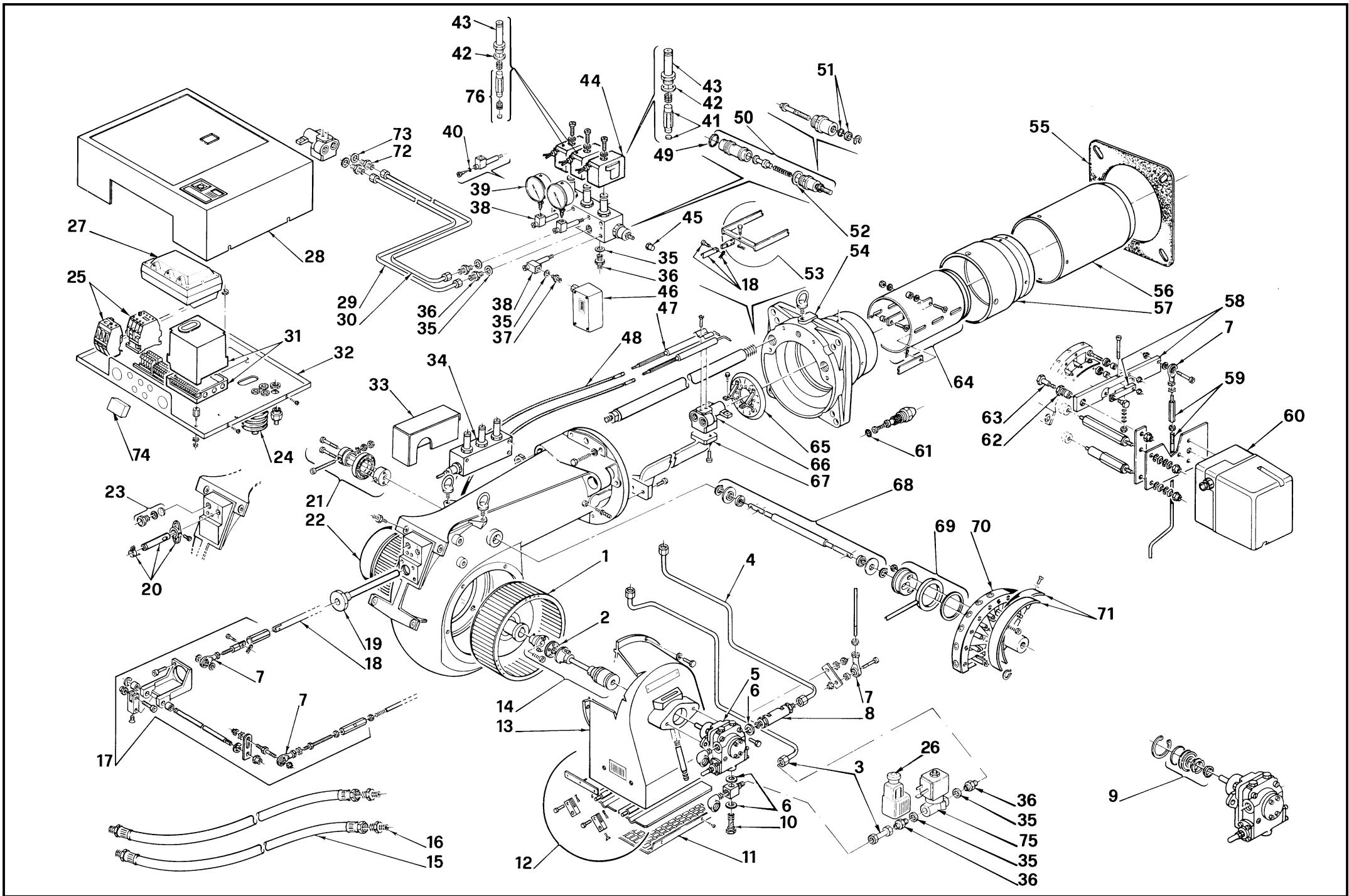


- I** Bruciatori di gasolio
- GB** Light oil burners
- F** Brûleurs fioul domestique
- D** Öl-Gebläsebrenner
- E** Quemadores de gasóleo

Funzionamento bistadio progressivo o modulante  
Progressive two stage or modulating operation  
Fonctionnement à deux allures progressives ou modulant  
Gleitend - zweistufiger oder modulierender Betrieb  
Funcionamiento a 2 llamas progresivas o modulante

| CODICE - CODE<br>CÓDIGO | MODELLO - MODEL - MODELE<br>MODELL - MODELO | TIPO - TYPE - TYP |
|-------------------------|---|-------------------|
| 20034826                | P 140 P/G                                   | 481 M1            |
| 20034827                | P 140 P/G                                   | 481 M1            |
| 20034828                | P 200 P/G                                   | 482 M1            |
| 20034829                | P 200 P/G                                   | 482 M1            |
| 20034245                | P 300 P/G                                   | 483 M1            |
| 20034830                | P 300 P/G                                   | 483 M1            |
| 20034246                | P 450 P/G                                   | 484 M1            |
| 20034831                | P 450 P/G                                   | 484 M1            |



| N. | COD.    | 20034826 | 20034827 * | 20034828 | 20034829 * | 20034245 | 20034830 * | 20034246 | 20034831 * | DESCRIZIONE         | DESCRIPTION         | DESCRIPTION          | BESCHREIBUNG     | DENOMINACION           | MATRICOLA BRUCIATORE<br>BURNER SERIAL NUMBER<br>MATRICULE BRULEUR<br>BRENNER KENN-NUMMER<br>MATRICULA QUEMADORES | ** |
|----|---------|----------|------------|----------|------------|----------|------------|----------|------------|---------------------|---------------------|----------------------|------------------|------------------------|--|----|
|    |         |          |            |          |            |          |            |          |            |                     |                     |                      |                  |                        |  |    |
| 1  | 3005508 | •        | •          |          |            |          |            |          |            | GIRANTE             | FAN                 | TURBINE              | GEBLÄSERAD       | TURBINA                |  | C  |
| 1  | 3012070 |          |            | •        | •          |          |            |          |            | GIRANTE             | FAN                 | TURBINE              | GEBLÄSERAD       | TURBINA                |  | C  |
| 1  | 3006155 |          |            |          |            | •        | •          |          |            | GIRANTE             | FAN                 | TURBINE              | GEBLÄSERAD       | TURBINA                |  | C  |
| 1  | 3006240 |          |            |          |            |          |            | •        | •          | GIRANTE             | FAN                 | TURBINE              | GEBLÄSERAD       | TURBINA                |  | C  |
| 2  | 3004821 | •        | •          | •        | •          | •        | •          | •        | •          | DISCO ELASTICO      | DRIVE DISC          | DISQUE ELASTIQUE     | KUPPLUNGSSCHEIBE | DISCO ELASTICO         |  | A  |
| 3  | 3012167 | •        | •          | •        | •          |          |            |          |            | TUBI                | TUBES               | TUYAUTERIES          | DRUCKRÖHRE       | TUBOS                  |  |    |
| 3  | 3012168 |          |            |          |            | •        | •          |          |            | TUBI                | TUBES               | TUYAUTERIES          | DRUCKRÖHRE       | TUBOS                  |  |    |
| 3  | 3012169 |          |            |          |            |          |            | •        | •          | TUBI                | TUBES               | TUYAUTERIES          | DRUCKRÖHRE       | TUBOS                  |  |    |
| 4  | 3003175 | •        | •          | •        | •          |          |            |          |            | TUBO                | TUBE                | TUYAUTERIE           | DRUCKROHR        | TUBOS                  |  |    |
| 4  | 3003176 |          |            |          |            | •        | •          |          |            | TUBO                | TUBE                | TUYAUTERIE           | DRUCKROHR        | TUBOS                  |  |    |
| 4  | 3003177 |          |            |          |            |          |            | •        | •          | TUBO                | TUBE                | TUYAUTERIE           | DRUCKROHR        | TUBOS                  |  |    |
| 5  | 3006158 | •        | •          | •        | •          |          |            |          |            | POMPA               | PUMP                | POMPE                | PUMPE            | BOMBA                  |  | C  |
| 5  | 3006236 |          |            |          |            | •        | •          |          |            | POMPA               | PUMP                | POMPE                | PUMPE            | BOMBA                  |  | C  |
| 5  | 3006410 |          |            |          |            |          |            | •        | •          | POMPA               | PUMP                | POMPE                | PUMPE            | BOMBA                  |  | C  |
| 6  | 3007164 | •        | •          | •        | •          | •        | •          | •        | •          | GUARNIZIONE         | SEAL                | RONDELLE             | METALLDICHTUNG   | JUNTA                  |  | B  |
| 7  | 3006098 | •        | •          | •        | •          | •        | •          | •        | •          | SNODO SFERICO       | PIN JOINT           | CHAPE A ROTULE       | KUGELGELENK      | ARTICOLACION ESFERICA  |  | C  |
| 8  | 3003178 | •        | •          | •        | •          | •        | •          | •        | •          | FILTRO              | FILTER              | FILTRE               | FILTER           | FILTRO                 |  | B  |
| 9  | 3000804 | •        | •          | •        | •          | •        | •          | •        | •          | ORGANO DI TENUTA    | PUMP SEAL           | ORGANE D'ETANCHEITE  | WELLENDICHTUNG   | CONJUNTO ESTANQUIDAD   |  |    |
| 10 | 3006184 | •        | •          | •        | •          | •        | •          | •        | •          | PERNO               | SCREW               | VIS CREUSE           | HOHLKERNSCHRAUBE | PERNO                  |  |    |
| 11 | 3003086 | •        | •          | •        | •          |          |            |          |            | PROTEZIONE          | GRID                | PROTECTION           | SCHUTZGITTER     | PROTECCIÓN             |  |    |
| 11 | 3003087 |          |            |          |            | •        | •          |          |            | PROTEZIONE          | GRID                | PROTECTION           | SCHUTZGITTER     | PROTECCIÓN             |  |    |
| 11 | 3003088 |          |            |          |            |          |            | •        | •          | PROTEZIONE          | GRID                | PROTECTION           | SCHUTZGITTER     | PROTECCIÓN             |  |    |
| 12 | 3003089 | •        | •          | •        | •          |          |            |          |            | GRUPPO SERRANDA     | AIR DAMPER ASSEMBLY | GROUPE VOLET AIR     | LUFTKLAPPE       | CONJUNTO REGISTRO AIRE |  |    |
| 12 | 3003090 |          |            |          |            | •        | •          |          |            | GRUPPO SERRANDA     | AIR DAMPER ASSEMBLY | GROUPE VOLET AIR     | LUFTKLAPPE       | CONJUNTO REGISTRO AIRE |  |    |
| 12 | 3003091 |          |            |          |            |          |            | •        | •          | GRUPPO SERRANDA     | AIR DAMPER ASSEMBLY | GROUPE VOLET AIR     | LUFTKLAPPE       | CONJUNTO REGISTRO AIRE |  |    |
| 13 | 3003180 | •        | •          | •        | •          |          |            |          |            | BOCCA D'ASPIRAZIONE | AIR INTAKE          | BOITIER D'ASPIRATION | ANSAUGÖFFNUNG    | BOCA ASPIRACION        |  |    |
| 13 | 3003181 |          |            |          |            | •        | •          |          |            | BOCCA D'ASPIRAZIONE | AIR INTAKE          | BOITIER D'ASPIRATION | ANSAUGÖFFNUNG    | BOCA ASPIRACION        |  |    |
| 13 | 3003182 |          |            |          |            |          |            | •        | •          | BOCCA D'ASPIRAZIONE | AIR INTAKE          | BOITIER D'ASPIRATION | ANSAUGÖFFNUNG    | BOCA ASPIRACION        |  |    |

| N. | COD.     | 20034826 | 20034827 * | 20034828 | 20034829 * | 20034245 | 20034830 * | 20034246 | 20034831 * | DESCRIZIONE                | DESCRIPTION          | DESCRIPTION                   | BESCHREIBUNG               | DENOMINACION            | MATRICOLA BRUCIATORE<br>BURNER SERIAL NUMBER<br>MATRICULE BRULEUR<br>BRENNER KENN-NUMMER<br>MATRICULA QUEMADÓRES | * * |
|----|----------|----------|------------|----------|------------|----------|------------|----------|------------|----------------------------|----------------------|-------------------------------|----------------------------|-------------------------|--|-----|
|    |          |          |            |          |            |          |            |          |            |                            |                      |                               |                            |                         |  |     |
| 14 | 3000740  | •        | •          | •        | •          |          |            |          |            | GRUPPO GIUNZIONE           | DRIVE COUPLING       | ACCOUPEMENT                   | KUPPLUNG                   | ACOPLADOR IMPULSOR      |  | A   |
| 14 | 3000739  |          |            |          |            | •        | •          |          |            | GRUPPO GIUNZIONE           | DRIVE COUPLING       | ACCOUPEMENT                   | KUPPLUNG                   | ACOPLADOR IMPULSOR      |  | A   |
| 14 | 3000741  |          |            |          |            |          |            | •        | •          | GRUPPO GIUNZIONE           | DRIVE COUPLING       | ACCOUPEMENT                   | KUPPLUNG                   | ACOPLADOR IMPULSOR      |  | A   |
| 15 | 20034085 | •        | •          | •        | •          | •        | •          | •        | •          | TUBO FLESSIBILE            | HOSE                 | FLEXIBLE                      | SCHLAUCH                   | TUBO FLEXIBLE           |  | A   |
| 16 | 3006181  | •        | •          | •        | •          | •        | •          | •        | •          | RACCORDO                   | CONNECTOR            | MAMELON                       | NIPPEL                     | RACORD                  |  |     |
| 17 | 3003092  | •        | •          | •        | •          | •        | •          | •        | •          | GRUPPO DI TRASCINAMENTO    | MODULATION LINKAGE   | SYSTEM DE TRANSLATION         | VORSCHUBSYSTEM             | GRUPO DE ARRASTRE       |  |     |
| 18 | 3003183  | •        | •          | •        | •          |          |            |          |            | ASTA                       | SLIDE BAR            | TIGE                          | STANGE                     | TIRANTE                 |  |     |
| 18 | 3003184  |          |            |          |            | •        | •          |          |            | ASTA                       | SLIDE BAR            | TIGE                          | STANGE                     | TIRANTE                 |  |     |
| 18 | 3003185  |          |            |          |            |          |            | •        | •          | ASTA                       | SLIDE BAR            | TIGE                          | STANGE                     | TIRANTE                 |  |     |
| 19 | 3003093  | •        | •          | •        | •          | •        | •          | •        | •          | GUIDA                      | GUIDA                | GUIDE                         | GLEITFÜHRUNG               | GUÍA                    |  |     |
| 20 | 3006216  | •        | •          | •        | •          | •        | •          | •        | •          | FOTORESISTENZA             | P.E. CELL            | CELLULE                       | FOTOWIDERSTAND             | FOTORESISTENCIA         |  | A   |
| 21 | 3003186  | •        | •          | •        | •          | •        | •          | •        | •          | CUSCINETTO                 | BEARING              | ROULEMENT                     | LAGER                      | COJINETE                |  | C   |
| 22 | 3008408  | •        | •          |          |            |          |            |          |            | MOTORE                     | MOTOR                | MOTEUR                        | MOTOR                      | MOTOR                   |  | C   |
| 22 | 20050916 |          |            | •        | •          |          |            |          |            | MOTORE                     | MOTOR                | MOTEUR                        | MOTOR                      | MOTOR                   |  | C   |
| 22 | 3013595  |          |            |          |            | •        | •          |          |            | MOTORE                     | MOTOR                | MOTEUR                        | MOTOR                      | MOTOR                   |  | C   |
| 22 | 20050961 |          |            |          |            |          |            | •        | •          | MOTORE                     | MOTOR                | MOTEUR                        | MOTOR                      | MOTOR                   |  | C   |
| 23 | 3003097  | •        | •          | •        | •          | •        | •          | •        | •          | VETRINO                    | VIEWING PORT         | REGARD                        | SCHAUGLAS                  | MIRILLA                 |  |     |
| 24 | 3003149  | •        | •          | •        | •          | •        | •          | •        | •          | CUFFIA                     | COWLING              | PROTECTION CAOUTCHOU          | SCHUTZ                     | CAPUZÓN                 |  |     |
| 25 | 3012363  | •        | •          |          |            |          |            |          |            | RELE' TERMICO + CONTATTORE | OVERLOAD + CONTACTOR | RELAIS THERMIQUE + CONTACTEUR | ÜBERSTROMAUSLÖSER + SCHÜTZ | RELÈ TERMICO + CONTADOR |  | C   |
| 25 | 3003621  |          |            | •        | •          |          |            |          |            | RELE' TERMICO + CONTATT.   | OVERLOAD + CONTACTOR | RELAIS THERMIQUE + CONTACTEUR | ÜBERSTROMAUSLÖSER + SCHÜTZ | RELÈ TERMICO + CONTADOR |  | C   |
| 26 | 3012166  | •        | •          | •        | •          |          |            |          |            | PRESA                      | SOCKET               | PRISE                         | STECKERBUCHSE              | CONECTADOR              |  | C   |
| 26 | 3012194  |          |            |          |            | •        | •          | •        | •          | PRESA                      | SOCKET               | PRISE                         | STECKERBUCHSE              | CONECTADOR              |  | C   |
| 27 | 3012164  | •        | •          | •        | •          | •        | •          | •        | •          | TRASFORMATORE              | TRANSFORMER          | TRANSFORMATEUR                | ZÜNDTRANSFORMATOR          | TRANSFORMADOR           |  |     |
| 28 | 3003100  | •        | •          | •        | •          | •        | •          | •        | •          | COPERCHIO                  | COVER                | COUVERCLE                     | DECKEL                     | TAPA                    |  |     |
| 29 | 3003187  | •        | •          |          |            |          |            |          |            | TUBO                       | TUBE                 | TUYAUTERIE                    | DRUCKROHR                  | TUBO                    |  |     |
| 29 | 3003188  |          | •          | •        |            |          |            |          |            | TUBO                       | TUBE                 | TUYAUTERIE                    | DRUCKROHR                  | TUBO                    |  |     |
| 29 | 3003189  |          |            |          |            | •        |            |          |            | TUBO                       | TUBE                 | TUYAUTERIE                    | DRUCKROHR                  | TUBO                    |  |     |
| 29 | 3003190  |          |            |          |            |          |            | •        |            | TUBO                       | TUBE                 | TUYAUTERIE                    | DRUCKROHR                  | TUBO                    |  |     |

| N. | COD.     | 20034826 | 20034827 * | 20034828 | 20034829 * | 20034245 | 20034830 * | 20034246 | 20034831 * | DESCRIZIONE     | DESCRIPTION     | DESCRIPTION       | BESCHREIBUNG    | DENOMINACION    | MATRICOLA BRUCIATORE<br>BURNER SERIAL NUMBER<br>MATRICULE BRULEUR<br>BRENNER KENN-NUMMER<br>MATRICULA QUEMADÓRES | * * |
|----|----------|----------|------------|----------|------------|----------|------------|----------|------------|-----------------|-----------------|-------------------|-----------------|-----------------|--|-----|
|    |          |          |            |          |            |          |            |          |            |                 |                 |                   |                 |                 |  |     |
| 29 | 3003191  |          |            |          |            |          |            | •        |            | TUBO            | TUBE            | TUYAUTERIE        | DRUCKROHR       | TUBO            |  |     |
| 29 | 3003192  |          |            |          |            |          |            | •        |            | TUBO            | TUBE            | TUYAUTERIE        | DRUCKROHR       | TUBO            |  |     |
| 30 | 3003193  | •        | •          |          |            |          |            |          |            | TUBO            | TUBE            | TUYAUTERIE        | DRUCKROHR       | TUBO            |  |     |
| 30 | 3003194  | •        | •          |          |            |          |            |          |            | TUBO            | TUBE            | TUYAUTERIE        | DRUCKROHR       | TUBO            |  |     |
| 30 | 3003195  |          |            |          | •          |          |            |          |            | TUBO            | TUBE            | TUYAUTERIE        | DRUCKROHR       | TUBO            |  |     |
| 30 | 3003196  |          |            |          |            |          | •          |          |            | TUBO            | TUBE            | TUYAUTERIE        | DRUCKROHR       | TUBO            |  |     |
| 30 | 3003197  |          |            |          |            |          |            | •        |            | TUBO            | TUBE            | TUYAUTERIE        | DRUCKROHR       | TUBO            |  |     |
| 30 | 3003198  |          |            |          |            |          |            | •        |            | TUBO            | TUBE            | TUYAUTERIE        | DRUCKROHR       | TUBO            |  |     |
| 31 | 3006215  | •        | •          | •        | •          | •        | •          | •        | •          | APPARECCHIATURA | CONTROL BOX     | BOITE DE CONTROLE | STEUERGERÄT     | CAJA DE CONTROL |  | B   |
| 32 | 3003098  | •        | •          | •        | •          | •        | •          | •        | •          | MENSOLA         | BASE PLATE      | PLAQUE DE SUPPORT | GRUNDPLATTE     | REPISA          |  |     |
| 33 | 3003199  | •        | •          | •        | •          | •        | •          | •        | •          | CARTER          | CRANKCASE       | CACHE             | ABDECKUNG       | CARTER          |  |     |
| 34 | 3006227  | •        | •          | •        | •          | •        | •          |          |            | MODULATORE      | MODULATOR       | MODULATEUR        | MODULATOR       | MODULATOR       |  | B   |
| 34 | 3006227  |          |            |          |            |          |            | •        | •          | MODULATORE      | MODULATOR       | MODULATEUR        | MODULATOR       | MODULATOR       | ≤ 02132xxxxx   | B   |
| 34 | 20029107 |          |            |          |            |          |            | •        | •          | MODULATORE      | MODULATOR       | MODULATEUR        | MODULATOR       | MODULATOR       | ≥ 02142xxxxx   | B   |
| 35 | 3007079  | •        | •          | •        | •          | •        | •          | •        | •          | GUARNIZIONE     | SEAL            | RONDELLE          | METALLDICHTUNG  | JUNTA           |  | B   |
| 36 | 3009081  | •        | •          | •        | •          | •        | •          | •        | •          | RACCORDO        | CONNECTOR       | MAMELON           | NIPPEL          | RACORD          |  | C   |
| 37 | 3009075  | •        | •          | •        | •          | •        | •          | •        | •          | RACCORDO        | CONNECTOR       | MAMELON           | NIPPEL          | RACORD          |  | C   |
| 38 | 3006540  | •        | •          | •        | •          | •        | •          | •        | •          | VALVOLA         | NEEDLE VALVE    | ROBINET POINTEAU  | NADELVENTIL     | VÁLVULA         |  |     |
| 39 | 3006140  | •        | •          | •        | •          | •        | •          | •        | •          | MANOMETRO       | PRESSURE GAUGE  | MANOMETRE         | MANOMETER       | MANOMETRO       |  |     |
| 40 | 3007169  | •        | •          | •        | •          | •        | •          | •        | •          | ANELLO OR       | O RING          | JOINT TORIQUE     | O-RING          | JUNTA TÓRICA    |  | B   |
| 41 | 3006108  | •        | •          | •        | •          | •        | •          |          |            | NUCLEO          | ARMATURE        | NOYAU E.V.        | SPULENKERN      | NÚCLEO          |  |     |
| 41 | 3006108  |          |            |          |            |          |            | •        | •          | NUCLEO          | ARMATURE        | NOYAU E.V.        | SPULENKERN      | NÚCLEO          | ≤ 02132xxxxx   |     |
| 41 | 3014198  |          |            |          |            |          |            | •        | •          | NUCLEO          | ARMATURE        | NOYAU E.V.        | SPULENKERN      | NÚCLEO          | ≥ 02142xxxxx   |     |
| 42 | 3007081  | •        | •          | •        | •          | •        | •          | •        | •          | GUARNIZIONE     | SEAL            | RONDELLE          | METALLDICHTUNG  | JUNTA           |  | B   |
| 43 | 3005392  | •        | •          | •        | •          | •        | •          | •        | •          | GUAINA          | ARMATURE SLEEVE | GAIN E.V.         | MV-HÜLSE        | VAINA           |  | A   |
| 44 | 3003001  | •        | •          | •        | •          | •        | •          | •        | •          | BOBINA          | COIL            | BOBINE E.V.       | MV-SPULE        | BOBINA          |  | B   |
| 45 | 3003200  | •        | •          | •        | •          | •        | •          | •        | •          | DADO            | NUT             | ECROU BORGNE      | MUTTER          | TUERCA          |  |     |
| 46 | 20037209 | •        | •          | •        | •          | •        | •          | •        | •          | PRESSOSTATO     | PRESSURE SWITCH | PRESSOSTAT        | PRESSOSTAT      | PRESÓSTATO      |  | A   |
| 47 | 3006178  | •        | •          | •        | •          | •        | •          | •        | •          | ELETTRODO CORTO | SHORT ELECTRODE | ELECTRODE COURTE  | KURZE ELEKTRODE | ELECTRODO CORTO |  | A   |
| 47 | 3006179  | •        | •          | •        | •          | •        | •          | •        | •          | ELETTRODO LUNGO | LONG ELECTRODE  | ELECTRODE LONGUE  | LANGE ELEKTRODE | ELECTRODO LARGO |  | A   |

| N. | COD.    | 20034826 | 20034827 * | 20034828 | 20034829 * | 20034245 | 20034830 * | 20034246 | 20034831 * | DESCRIZIONE        | DESCRIPTION         | DESCRIPTION               | BESCHREIBUNG            | DENOMINACION                | MATRICOLA BRUCIATORE<br>BURNER SERIAL NUMBER<br>MATRICULE BRULEUR<br>BRENNER KENN-NUMMER<br>MATRICULA QUEMADORES | * * |
|----|---------|----------|------------|----------|------------|----------|------------|----------|------------|--------------------|---------------------|---------------------------|-------------------------|-----------------------------|--|-----|
|    |         |          |            |          |            |          |            |          |            |                    |                     |                           |                         |                             |  |     |
| 48 | 3012163 | •        | •          | •        | •          | •        | •          | •        | •          | COLLEGAMENTO       | H.T. LEAD           | CABLE H.T.                | ZÜNDKABEL               | CABLE CONEXIÓN<br>ELECTRODO |  | A   |
| 49 | 3003201 | •        | •          | •        | •          | •        | •          | •        | •          | ANELLO OR          | O RING              | JOINT TORIQUE             | O-RING                  | JUNTA TÓRICA                |  | B   |
| 50 | 3003202 | •        | •          | •        | •          | •        | •          | •        | •          | GRUPPO REGOLATORE  | CONTROL DEVICE      | GROUPE OBTURATION         | DRUCKREGULIERUNG        | GRUPO REGULACIÓN            |  | C   |
| 51 | 3003203 | •        | •          | •        | •          | •        | •          | •        | •          | ANELLI             | RINGS               | ANNEAUX                   | RINGE                   | ANILLOS                     |  |     |
| 52 | 3003204 | •        | •          | •        | •          | •        | •          | •        | •          | GUARNIZIONE        | SEAL                | RONDELLE                  | METALLDICHTUNG          | JUNTA                       |  | B   |
| 53 | 3003205 | •        | •          |          |            |          |            |          |            | GRUPPO AVANZAMENTO | ADJUSTMENT ASSEMBLY | GROUPE ENTRAINEMENT       | VORSCHUB<br>HEBELSYSTEM | GRUPO DE AVANCE             |  |     |
| 53 | 3003206 |          |            | •        | •          |          |            |          |            | GRUPPO AVANZAMENTO | ADJUSTMENT ASSEMBLY | GROUPE ENTRAINEMENT       | VORSCHUB<br>HEBELSYSTEM | GRUPO DE AVANCE             |  |     |
| 53 | 3003207 |          |            |          |            | •        | •          |          |            | GRUPPO AVANZAMENTO | ADJUSTMENT ASSEMBLY | GROUPE ENTRAINEMENT       | VORSCHUB<br>HEBELSYSTEM | GRUPO DE AVANCE             |  |     |
| 53 | 3003208 |          |            |          |            |          |            | •        | •          | GRUPPO AVANZAMENTO | ADJUSTMENT ASSEMBLY | GROUPE ENTRAINEMENT       | VORSCHUB<br>HEBELSYSTEM | GRUPO DE AVANCE             |  |     |
| 54 | 3006170 | •        | •          |          |            |          |            |          |            | BOCCAGLIO          | BLAST TUBE          | GUEULARD                  | BRENNERFLANSCH          | TUBO LLAMA                  |  |     |
| 54 | 3006189 |          |            | •        | •          |          |            |          |            | BOCCAGLIO          | BLAST TUBE          | GUEULARD                  | BRENNERFLANSCH          | TUBO LLAMA                  |  |     |
| 54 | 3006203 |          |            |          |            | •        | •          |          |            | BOCCAGLIO          | BLAST TUBE          | GUEULARD                  | BRENNERFLANSCH          | TUBO LLAMA                  |  |     |
| 54 | 3006242 |          |            |          |            |          |            | •        | •          | BOCCAGLIO          | BLAST TUBE          | GUEULARD                  | BRENNERFLANSCH          | TUBO LLAMA                  |  |     |
| 55 | 3006180 | •        | •          | •        | •          |          |            |          |            | SCHERMO            | FLANGE GASKET       | ECRAN THERMIQUE           | FLANSCHDICHTUNG         | JUNTA BRIDA                 |  |     |
| 55 | 3006210 |          |            |          |            | •        | •          |          |            | SCHERMO            | FLANGE GASKET       | ECRAN THERMIQUE           | FLANSCHDICHTUNG         | JUNTA BRIDA                 |  |     |
| 55 | 3006244 |          |            |          |            |          |            | •        | •          | SCHERMO            | FLANGE GASKET       | ECRAN THERMIQUE           | FLANSCHDICHTUNG         | JUNTA BRIDA                 |  |     |
| 56 | 3006229 | •        | •          |          |            |          |            |          |            | IMBUTO FIAMMA      | END CONE            | EMBOUT GUEULARD           | FLAMMENROHR             | TUBO EXTREMO                |  | B   |
| 56 | 3006233 |          |            | •        | •          |          |            |          |            | IMBUTO FIAMMA      | END CONE            | EMBOUT GUEULARD           | FLAMMENROHR             | TUBO EXTREMO                |  | B   |
| 56 | 3006237 |          |            |          |            | •        | •          |          |            | IMBUTO FIAMMA      | END CONE            | EMBOUT GUEULARD           | FLAMMENROHR             | TUBO EXTREMO                |  | B   |
| 56 | 3006243 |          |            |          |            |          |            | •        | •          | IMBUTO FIAMMA      | END CONE            | EMBOUT GUEULARD           | FLAMMENROHR             | TUBO EXTREMO                |  | B   |
| 57 | 3006175 |          | •          |          |            |          |            |          |            | PROLUNGA           | BLAST TUBE          | RALLONGE                  | VERLÄNGERUNG            | EXTENSIÓN                   |  |     |
| 57 | 3006193 |          |            |          | •          |          |            |          |            | PROLUNGA           | BLAST TUBE          | RALLONGE                  | VERLÄNGERUNG            | EXTENSIÓN                   |  |     |
| 57 | 3006207 |          |            |          |            |          | •          |          |            | PROLUNGA           | BLAST TUBE          | RALLONGE                  | VERLÄNGERUNG            | EXTENSIÓN                   |  |     |
| 57 | 3006245 |          |            |          |            |          |            | •        |            | PROLUNGA           | BLAST TUBE          | RALLONGE                  | VERLÄNGERUNG            | EXTENSIÓN                   |  |     |
| 58 | 3003145 | •        | •          | •        | •          | •        | •          | •        | •          | LEVISMO            | LIFTING ASSEMBLY    | LEVIER DE<br>TRANSMISSION | HEBELSYSTEM             | CONJUNTO DE<br>ELEVACIÓN    |  |     |
| 59 | 3003146 | •        | •          | •        | •          |          |            |          |            | TIRANTE            | TIE ROD             | TIRANT                    | GESTÄNGE                | TIRANTE                     |  | C   |
| 59 | 3003147 |          |            |          |            | •        | •          |          |            | TIRANTE            | TIE ROD             | TIRANT                    | GESTÄNGE                | TIRANTE                     |  | C   |

| N. | COD.    | 20034826 | 20034827 * | 20034828 | 20034829 * | 20034245 | 20034830 * | 20034246 | 20034831 * | DESCRIZIONE    | DESCRIPTION   | DESCRIPTION     | BESCHREIBUNG     | DENOMINACION        | MATRICOLA BRUCIATORE<br>BURNER SERIAL NUMBER<br>MATRICULE BRULEUR<br>BRENNER KENN-NUMMER<br>MATRICULA QUEMADÓRES | * * |
|----|---------|----------|------------|----------|------------|----------|------------|----------|------------|----------------|---------------|-----------------|------------------|---------------------|--|-----|
|    |         |          |            |          |            |          |            |          |            |                |               |                 |                  |                     |  |     |
| 59 | 3003148 |          |            |          |            |          |            | •        | •          | TIRANTE        | TIE ROD       | TIRANT          | GESTÄNGE         | TIRANTE             |  | C   |
| 60 | 3006092 | •        | •          | •        | •          | •        | •          | •        | •          | SERVOMOTORE    | SERVOMOTOR    | SERVOMOTEUR     | STELLMOTOR       | SERVOMOTOR          |  | B   |
| 61 | 3007168 | •        | •          | •        | •          | •        | •          | •        | •          | ANELLO         | PISTON SEAL   | JOINT TORIQUE   | LIPPENDICHTUNG   | JUNTA TORICA        |  | B   |
| 62 | 3003143 | •        | •          | •        | •          | •        | •          | •        | •          | VITE           | SCREW         | VIS             | SCHRAUBE         | TORNILLO            |  |     |
| 63 | 3003144 | •        | •          | •        | •          | •        | •          | •        | •          | RACCORDO       | CONNECTOR     | MAMELON         | NIPPEL           | RACORD              |  |     |
| 64 | 3003209 | •        |            |          |            |          |            |          |            | CILINDRO CORTO | SHORT SLEEVE  | CYLINDRE COURT  | KURZER ZYLINDER  | CILINDRO CORTO      |  | C   |
| 64 | 3003210 | •        |            |          |            |          |            |          |            | CILINDRO LUNGO | LONG SLEEVE   | CYLINDRE LONG   | LANGER ZYLINDER  | CILINDRO LARGO      |  | C   |
| 64 | 3003211 |          | •          |          |            |          |            |          |            | CILINDRO CORTO | SHORT SLEEVE  | CYLINDRE COURT  | KURZER ZYLINDER  | CILINDRO CORTO      |  | C   |
| 64 | 3003212 |          |            | •        |            |          |            |          |            | CILINDRO LUNGO | LONG SLEEVE   | CYLINDRE LONG   | LANGER ZYLINDER  | CILINDRO LARGO      |  | C   |
| 64 | 3003213 |          |            |          | •          |          |            |          |            | CILINDRO CORTO | SHORT SLEEVE  | CYLINDRE COURT  | KURZER ZYLINDER  | CILINDRO CORTO      |  | C   |
| 64 | 3003214 |          |            |          |            | •        |            |          |            | CILINDRO LUNGO | LONG SLEEVE   | CYLINDRE LONG   | LANGER ZYLINDER  | CILINDRO LARGO      |  | C   |
| 64 | 3003215 |          |            |          |            |          | •          |          |            | CILINDRO CORTO | SHORT SLEEVE  | CYLINDRE COURT  | KURZER ZYLINDER  | CILINDRO CORTO      |  | C   |
| 64 | 3003216 |          |            |          |            |          |            | •        |            | CILINDRO LUNGO | LONG SLEEVE   | CYLINDRE LONG   | LANGER ZYLINDER  | CILINDRO LARGO      |  | C   |
| 65 | 3006219 | •        | •          |          |            |          |            |          |            | ELICA          | DIFFUSER DISC | ACCROCHE FLAMME | STAUSCHEIBE      | DISCO ESTABILIZADOR |  | A   |
| 65 | 3006223 |          |            | •        | •          |          |            |          |            | ELICA          | DIFFUSER DISC | ACCROCHE FLAMME | STAUSCHEIBE      | DISCO ESTABILIZADOR |  | A   |
| 65 | 3006224 |          |            |          |            | •        | •          |          |            | ELICA          | DIFFUSER DISC | ACCROCHE FLAMME | STAUSCHEIBE      | DISCO ESTABILIZADOR |  | A   |
| 65 | 3006241 |          |            |          |            |          |            | •        | •          | ELICA          | DIFFUSER DISC | ACCROCHE FLAMME | STAUSCHEIBE      | DISCO ESTABILIZADOR |  | A   |
| 66 | 3006228 | •        | •          | •        | •          | •        | •          | •        | •          | POLVERIZZATORE | NOZZLE HOLDER | PULVERISATEUR   | DÜSENSTOCK       | PULVERIZADOR        |  |     |
| 67 | 3006196 | •        |            | •        |            |          |            |          |            | STAFFA CORTA   | SHORT BRACKET | SUPPORT COURT   | KURZER HALTERUNG | SOPORTE CORTO       |  |     |
| 67 | 3006198 |          | •          |          | •          |          |            |          |            | STAFFA LUNGA   | LONG BRACKET  | SUPPORT LONG    | LANGE HALTERUNG  | SOPORTE LARGO       |  |     |
| 67 | 3006197 |          |            |          |            | •        |            |          |            | STAFFA CORTA   | SHORT BRACKET | SUPPORT COURT   | KURZER HALTERUNG | SOPORTE CORTO       |  |     |
| 67 | 3006199 |          |            |          |            |          | •          |          |            | STAFFA LUNGA   | LONG BRACKET  | SUPPORT LONG    | LANGE HALTERUNG  | SOPORTE LARGO       |  |     |
| 67 | 3006248 |          |            |          |            |          |            | •        |            | STAFFA CORTA   | SHORT BRACKET | SUPPORT COURT   | KURZER HALTERUNG | SOPORTE CORTO       |  |     |
| 67 | 3006249 |          |            |          |            |          |            |          | •          | STAFFA LUNGA   | LONG BRACKET  | SUPPORT LONG    | LANGE HALTERUNG  | SOPORTE LARGO       |  |     |
| 68 | 3003217 | •        | •          | •        | •          |          |            |          |            | ALBERO         | SHAFT         | ARBRE           | WELLE            | ARBORILLO           |  |     |
| 68 | 3003218 |          |            |          |            | •        | •          |          |            | ALBERO         | SHAFT         | ARBRE           | WELLE            | ARBORILLO           |  |     |
| 68 | 3003219 |          |            |          |            |          |            | •        | •          | ALBERO         | SHAFT         | ARBRE           | WELLE            | ARBORILLO           |  |     |
| 69 | 3003140 | •        | •          | •        | •          |          |            |          |            | BIELLA         | LINKAGE       | BIELLETTE       | PLEUEL           | BIELA               |  |     |
| 69 | 3003141 |          |            |          |            | •        | •          |          |            | BIELLA         | LINKAGE       | BIELLETTE       | PLEUEL           | BIELA               |  |     |
| 69 | 3003142 |          |            |          |            |          |            | •        | •          | BIELLA         | LINKAGE       | BIELLETTE       | PLEUEL           | BIELA               |  |     |

| N. | COD.    | 20034826 | 20034827 * | 20034828 | 20034829 * | 20034245 | 20034830 * | 20034246 | 20034831 * | DESCRIZIONE         | DESCRIPTION    | DESCRIPTION   | BESCHREIBUNG   | DENOMINACION                  | MATRICOLA BRUCIATORE<br>BURNER SERIAL NUMBER<br>MATRICULE BRULEUR<br>BRENNER KENN-NUMMER<br>MATRICULA QUEMADORES | * * |
|----|---------|----------|------------|----------|------------|----------|------------|----------|------------|---------------------|----------------|---------------|----------------|-------------------------------|--|-----|
|    |         |          |            |          |            |          |            |          |            |                     |                |               |                |                               |  |     |
| 70 | 3006093 | •        | •          | •        | •          | •        | •          | •        | •          | CAMMA COMPLETA      | CAM ASSEMBLY   | CAME COMPLETE | VERBUNDREGLER  | EXCÉNTRICO COMPLETO           |  | C   |
| 71 | 3006097 | •        | •          | •        | •          | •        | •          | •        | •          | MOLLA               | FLAT SPRING    | RESSORT PLAT  | KURVENBAND     | MUELLE                        |  |     |
| 72 | 3003220 | •        | •          | •        | •          | •        | •          | •        | •          | RACCORDO            | CONNECTOR      | MAMELON       | NIPPEL         | RACORD                        |  | C   |
| 73 | 3007166 | •        | •          | •        | •          | •        | •          | •        | •          | GUARNIZIONE         | SEAL           | RONDELLE      | METALLDICHTUNG | JUNTA                         |  | B   |
| 74 | 3012155 | •        | •          | •        | •          | •        | •          | •        | •          | FILTRO ANTIDISTURBO | DEGLITCHER     | FILTRE        | ENTSTÖRER      | FILTRO ANTI-<br>INTERFERENCIA |  | A   |
| 75 | 3012165 | •        | •          | •        | •          | •        | •          | •        | •          | VALVOLA             | SOLENOID VALVE | ELECTRO-VANNE | MAGNETVENTIL   | VÁLVULA                       |  |     |
| 76 | 3014197 | •        | •          | •        | •          | •        | •          | •        | •          | NUCLEO              | ARMATURE       | NOYAU E.V.    | SPULENKERN     | NÚCLEO                        |  |     |

\*

Versione Testa Lunga - Long Combustion Head Version - Version Tête Longue - Langer Brennkopf Ausführung

\*\*

**RICAMBI CONSIGLIATI - ADVISED PARTS - RECHANGE CONSEIL - EMPFOHLENE ERSATZTEILE**

A = Ricambi per dotazione minima - Spare parts for minimum fittings - Pièces détachées pour équipement minimum - Ersatzteile für minimale Ausstattung

A+B = Ricambi per dotazione base di sicurezza - Spare parts for basic safety fittings - Pièces détachées pour équipement standard de sécurité - Ersatzteile für Sicherheitsgrundausrüstung

A+B+C = Ricambi per dotazione estesa di sicurezza - Spare parts for extended safety fittings - Pièces détachées pour équipement complet de sécurité - Ersatzteile für erweiterte Sicherheitsausstattung

# RIELLO

RIELLO S.p.A.

I-37045 Legnago (VR)

Tel.: +39.0442.630111

[http:// www.rielloburners.com](http://www.rielloburners.com)